

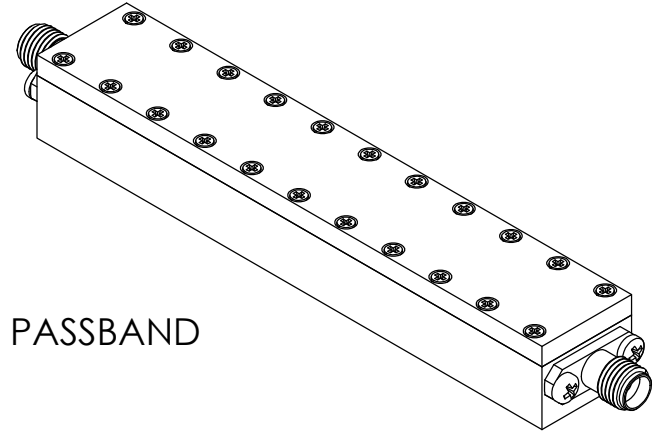
REVISIONS				
ECN	REV.	DESCRIPTION	CHNG/DATE	APPVD/DATE
	0	PRELIMINARY	2016-05-20/JSW	

**NUWAVES ENGINEERING PROPRIETARY INFORMATION**

THIS DOCUMENT IS THE SOLE PROPERTY OF NUWAVES ENGINEERING. THE RELEASE OF DATA CONTAINED IN THIS DOCUMENT AND THE REPRODUCTION OF THIS DOCUMENT, IN WHOLE OR IN PART, WITHOUT THE WRITTEN PERMISSION OF NUWAVES ENGINEERING, INC. ARE PROHIBITED.

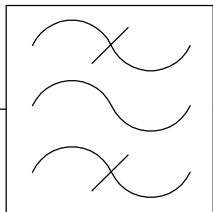
**ELECTRICAL SPECIFICATIONS:**

- C.F. = 8200 MHz NOMINAL
- I.L. = 0.6 dB MAX @ 8200 MHz
- VSWR = 1.4:1 MAX OVER 7700 TO 8700 MHz (REF 50 OHMS)
- FLATNESS WITHIN 0.4 dB OVER 7700 TO 8700 MHz
- AMPLITUDE FLATNESS WITHIN 0.2 dB OVER ANY 100 MHz ACROSS PASSBAND
- 40 dBc MIN @ 7480 MHz
- 40 dBc MIN @ 8920 MHz
- POWER HANDLING = 50 WATTS C.W. OVER PASSBAND
- GROUP DELAY FLATNESS = 2 nSEC OVER 7700 TO 8700 MHz
- OPERATING TEMPERATURE: -55 TO 85 °C



**APPLIES TO MODEL: NW-FL-10BPCV-8200-SFSF-M01**

**BANDPASS**



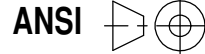
**FILTER**

**UNLESS OTHERWISE SPECIFIED**

- \* INTERPRET DRAWING IAW ASME Y14.100-2004
- \* DIMENSIONING AND TOLERANCING IAW ASME Y14.5-1994
- \* PARENTHETICAL INFORMATION FOR REFERENCE ONLY
- \* DIMENSIONAL LIMITS APPLY BEFORE PROCESSES
- \* DIMENSIONS ARE IN INCHES
- \* TOLERANCES ARE: ANGLES ±1.0° 2 PLACE DECIMAL ±.02
- \* SURFACE FINISH 3 PLACE DECIMAL ±.005
- \* REMOVE ALL BURRS AND SHARP EDGES .010 RAD MAX.
- \* CONCENTRICITY MACHINED DIA: .002 FIM
- \* MACHINED TOOL MISMATCH: .002 MAX.

**DO NOT SCALE DRAWING**

3rd ANGLE PROJECTION



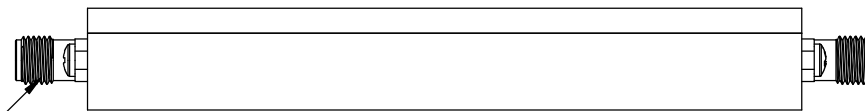
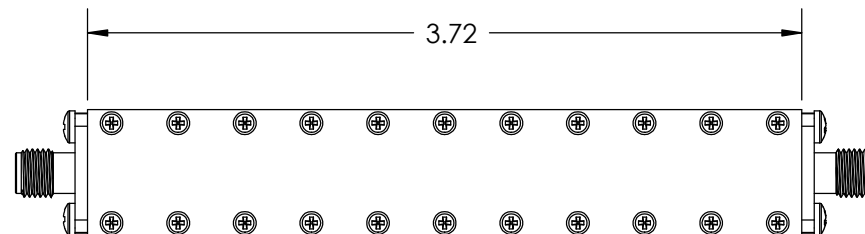
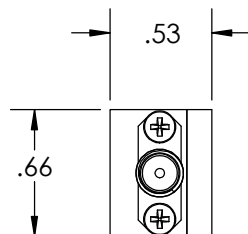
ANSI	
DRAWN JSW	DATE 2016-05-20
CHECKED ---	---
ENGRG ---	---
MFG ---	---
QA ---	---

**NUWAVES ENGINEERING**  
122 Edison Dr.  
Middletown OH, 45044 (USA)

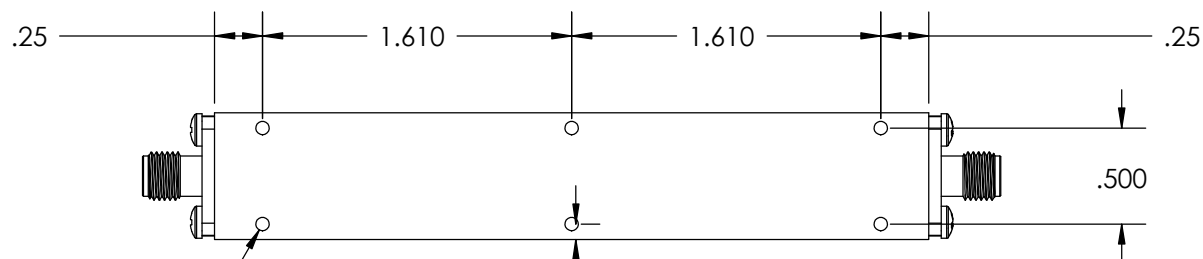
TITLE <b>FILTER, BANDPASS, COMBLINE - OUTLINE DRAWING</b>			
SIZE <b>A</b>	CAGE CODE <b>1ZJ73</b>	DWG NO. <b>ENVELOPE DRAWING</b>	REV <b>1</b>
SCALE: <b>1:1</b>		SHEET <b>1</b> OF <b>2</b>	

NOTES:

1. MATERIAL: HOUSING - AL ALLOY, LID - AL ALLOY
2. FINISH: NONE
3. CONNECTORS MIL-C-39012 COMPLIANT



2X SMA FEMALE

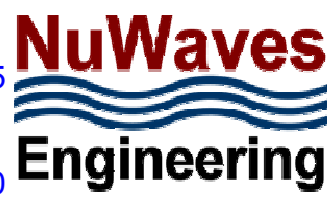
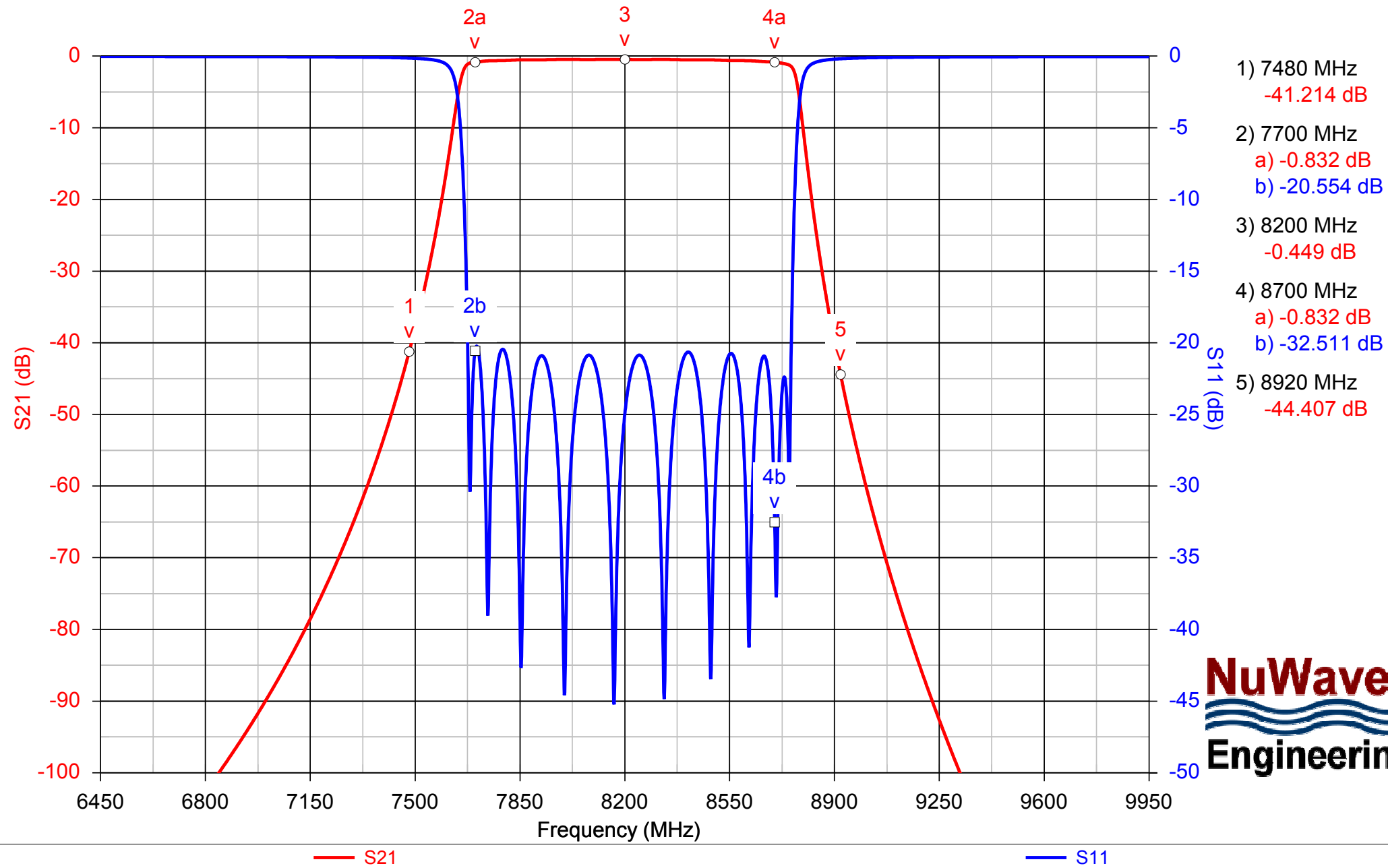


6X 2-56 UNC - 2B  $\nabla$  .16

6X .08

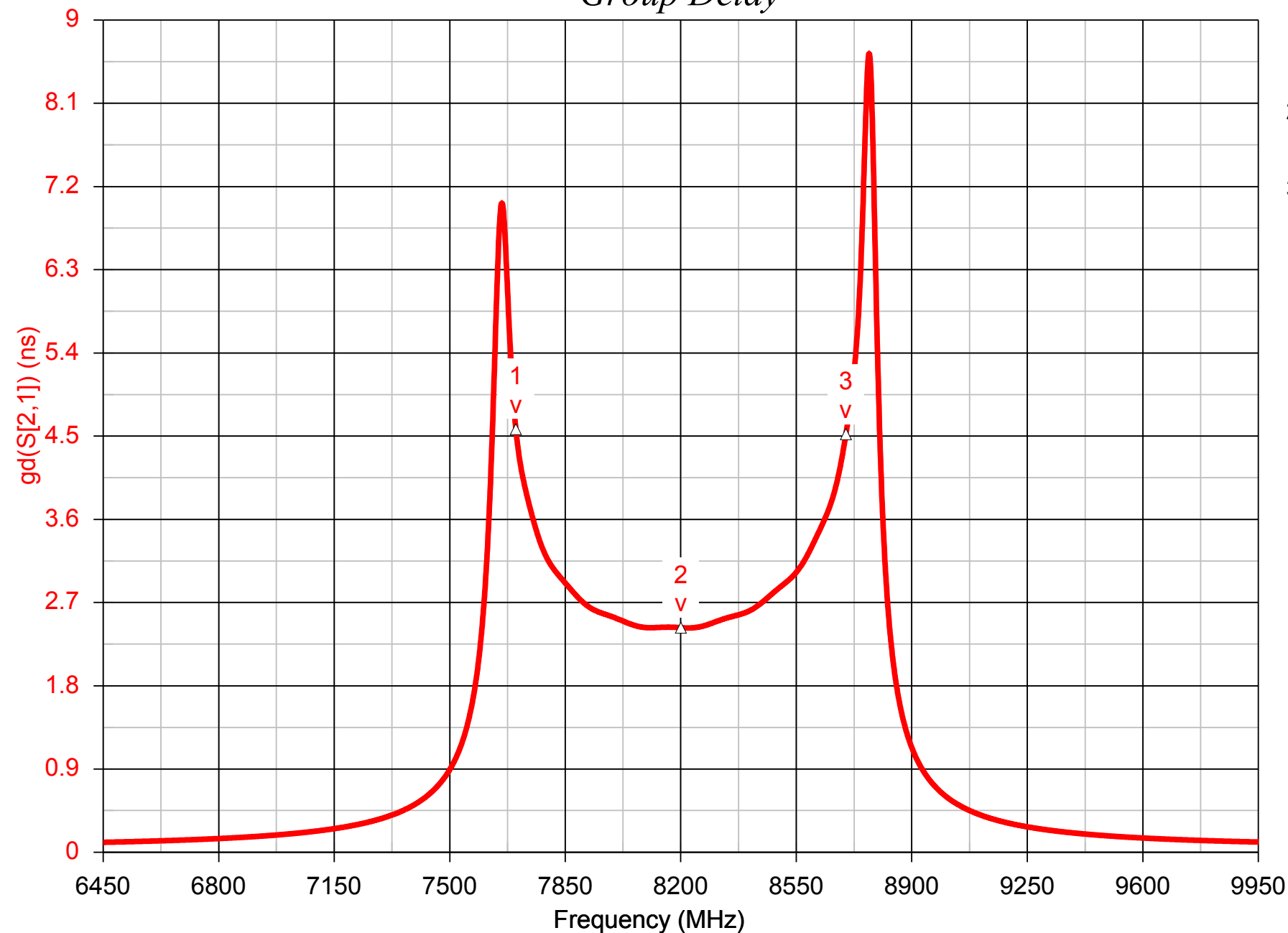
SIZE <b>A</b>	CAGE CODE <b>1ZJ73</b>	DWG NO. <b>ENVELOPE DRAWING</b>	REV <b>1</b>
SCALE: <b>1:1</b>		SHEET <b>2</b> OF <b>2</b>	

# Bandpass Filter: NW-FL-10BPCV-8200-SFSF-M01, 2016-05-20



# Bandpass Filter: NW-FL-10BPCV-8200-SFSF-M01, 2016-05-20

## Group Delay



- 1) 7700 MHz  
4.577 ns
- 2) 8200 MHz  
2.429 ns
- 3) 8700 MHz  
4.523 ns